



Out of this World



Mt. Washington
Pediatric Hospital

FY 2021 ANNUAL REPORT



Dear Friends,

In the face of enormous challenges caused by the global pandemic, Mt. Washington Pediatric Hospital's (MWPH) staff and community of generous supporters have come together as never before. Thanks to you, we have been able to keep moving forward as we fulfill our mission to care for children with complex medical needs. Our team has reached outside the hospital's walls to support the community with food and resources, alongside donors and community partners alike.

This year has been out of this world, and we have much to celebrate. In this year's report, we share our latest "Adventures in Space," as we open the expansion to the Rosenberg Outpatient Center and move to our new Prince George's County location within the brand-new University of Maryland Capital Region Medical Center. Both of these initiatives are helping MWPH grow and deepen the services we provide children and their families.

The Rosenberg expansion would not have been possible without the generous gifts of more than 400 donors, led by the Jack & Mae Rosenberg Charitable Trust. In this report, we profile Rosenberg trustee Marsha Stoller and tell the story of how the trust's long-term partnership with MWPH came to be. It's a shining example of the amazing things that can happen when people with a desire to give seek out and support the right organization.

You'll also read about the ways in which we're innovating at MWPH. Our robust pain management program starts with the simple idea that sparing children unnecessary pain – and the fear and anxiety associated with it – is both essential and achievable. You'll be amazed at the innovative techniques and tools our team uses. We're also proud to tell you about a new program in our psychology department that focuses on evaluating and treating children who have experienced trauma, meeting a significant need in our community.

Your philanthropy makes these stories possible. Thank you for sharing our commitment to the medically complex children and families we care for. With your support, we will continue to reach for the stars.

Our Mission

Mt. Washington Pediatric Hospital is dedicated to maximizing the health and independence of the children we serve.



Sheldon J. Stein
Sheldon J. Stein
President and CEO,
Mt. Washington
Pediatric Hospital



Fred Wolf III
Fred Wolf III, Esq.
Chair, Mt. Washington
Pediatric Hospital
Board of Trustees



Lauren Perlin
Lauren Perlin
Chair, Mt. Washington
Pediatric Foundation
Board of Trustees

Table of Contents

- 2 Adventures in Space
- 6 New Grant-Funded Trauma Program Shoots for the Moon
- 8 Our Shining Star
- 10 A Universe of Ways to Reduce Pain
- 13 Programs & Services
- 14 A Year of Caring
- 16 Year in Review
- 18 Volunteer Recognition
- 20 Annual Fund Donor List
- 25 Fiscal Report

Mt. Washington Pediatric Hospital provides family-focused, integrated care to children with serious, chronic or complex medical needs. Since 1922, the hospital has helped children heal from illness and injury, and now treats more than 8,500 patients each year. With locations in Baltimore City, Prince George's County, and in the community, the 102-bed post-acute hospital is a jointly-owned affiliate of the University of Maryland Medical System and Johns Hopkins Medicine.





Adventures in Space

MWPH continues to grow to care for more children in more ways, at both our Rogers Avenue and Prince George’s County locations.

When the Jack & Mae Rosenberg Outpatient Center was built and first started seeing patients – more than 20 years ago – MWPH quickly became a sought-after destination for pediatric outpatient care. The hospital’s multidisciplinary clinics and variety of outpatient subspecialties under one roof helped thousands of children with complex medical needs every year. Before long, the Rosenberg building reached its capacity, yet the hospital knew that many more children and families could benefit from access to MWPH’s world-class services. So, it was time to grow.

This spring, MWPH began seeing patients in the newly enlarged and renovated Rosenberg Outpatient Center.

The project has increased MWPH’s outpatient capacity, allowing for more than 15,000 additional patient visits each year.

“We were able to accomplish key strategic goals this past year, which included the expansion of Rosenberg to continue growing our outpatient services,” said Sheldon Stein, MWPH president and CEO. “We are working with our internal providers and our owner hospitals to identify outpatient behavioral health and medical specialty services that will dovetail with the hospital’s mission of providing specialty services for complex pediatric medical conditions. We can also now increase services where we have an identified demand, enabling us to meet existing needs.”

One of the biggest areas of persistent need in the community is in children’s outpatient behavioral health care. The project resulted in seven new therapy spaces, enabling MWPH to increase its psychology staff by seven pediatric psychologists. The psychology program will also add to its offerings, including growing the autism program to work with children from birth to age five, boosting the pediatric pain management program, and formalizing a pediatric trauma program.

“Expanding to meet the needs of children in our community is critical, and our supporters understand the importance of MWPH and the types of services we can provide.”

Jill Feinberg
VP, Development and External Affairs

To support collaboration among our multidisciplinary clinic teams, the facility now features clinical workspaces arranged in pods. These spaces will enable MWPH to offer new, innovative multidisciplinary programs. In addition to the expansion, the project also involved a renovation of the existing space including a cheerful waiting room and updated exam room equipment. Building on the lessons learned during the COVID-19 pandemic, the building now also has upgraded WiFi technology for telemedicine visits and larger workspaces that enable social distancing.



Rosenberg Outpatient Expansion by the Numbers

50% more square footage

7 patient exam rooms added



2 staff workspaces added

1 medication room added

7 behavioral health therapy spaces added

15,000+ additional outpatient visits per year

400+ donors



Top Reasons to Love Our New Capital Region Location



Convenient location

Large rooms with parent/caregiver accommodations



Larger Child Life playroom



Healing garden



Inpatient and outpatient services united on one floor



Philanthropic support from our community was absolutely crucial to this project's success, led by major gifts from the Jack & Mae Rosenberg Charitable Trust, the Mt. Washington Pediatric Foundation, Dr. Lawrence Pakula, and Leonard and Roslyn Stoler, among many others. "I'm delighted and humbled by the level of support we received from more than 400 donors, large and small, including 100 percent of our hospital board, foundation board and executive council as well as many MWPH staff members. I'm grateful to our development staff for working tirelessly to make this project a reality," shared Jill Feinberg, MWPH's vice president of development and external affairs.

"Expanding to meet the needs of children in our community is critical, and our supporters understand the importance of MWPH and the types of services we can provide. It's very exciting to walk into the Rosenberg building today and see the vibrant and welcoming new lobby, new exam rooms, and expanded psychology suite," Feinberg added.

Capital Region Move

While MWPH was increasing its footprint at the Rogers Avenue campus, exciting growth initiatives were underway in Prince George's County as well. In June, MWPH moved to its new location, within the site of the brand-new University of Maryland Capital Region Medical Center. There, the team continues to offer the same excellent inpatient and outpatient care, now in a state-of-the-art facility that is more comfortable and convenient for patient families and instrumental in the care our clinicians provide.

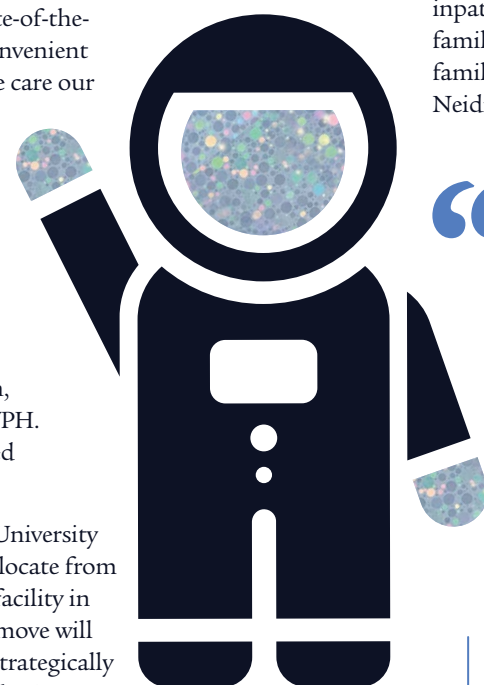
"MWPH has always had a strong commitment to the Prince George's County community. We provide a valued service in that part of the state, both inpatient and outpatient. We started the planning process for this move back in 2013, and we're delighted that the move has come to fruition," said Justina Starobin, vice president of outpatient services at MWPH. "We're happy to be positioned for continued growth in Prince George's County."

"I'm proud of our ability to work with the University of Maryland over the last several years to relocate from a 75-year-old building to a state-of-the-art facility in Prince George's County," Stein said. "This move will enable us to keep serving inpatients while strategically developing our outpatient program, redeveloping our sleep program, and working with the UM Capital Region's leadership to expand the services we're providing at this location."

MWPH's inpatient and outpatient unit are on the same floor, providing easier access for patients and families. Each room in the 15-bed inpatient unit is private or semi-private, with an en suite bathroom with shower, a pull-out sleeper sofa for parents or caregivers, and lots of natural light.



"Our patient families have been very pleased with the new unit and its brighter, bigger rooms – to the families who moved with us, it's like night and day," said Colleen Neidig, RN, nurse manager for MWPH's Capital Region inpatient unit. The best feature, according to patient families, is the ability to room-in with their babies. "The families have really enjoyed that aspect of the new space," Neidig added.



MWPH has always had a strong commitment to the Prince George's County community. We provide a valued service in that part of the state, both inpatient and outpatient.

Justina Starobin
VP, Outpatient Services

The inpatient rooms also feature cutting-edge equipment, and two of the rooms can be used to conduct overnight sleep studies, bringing that capability to Prince George's County. The child life playroom is now twice as big as the one at the previous location, and the hospital's healing garden offers a lovely outdoor space to relax and reflect.

On the outpatient side, MWPH's team of physical, occupational, and speech therapists will be able to collaborate and co-treat patients when needed, combining multiple treatment modalities in a single appointment and saving time for families. A variety of behavioral health services and medical clinics, including the interdisciplinary Developmental Evaluation Clinic, will continue to see patients at the new location. Cross-disciplinary teamwork has always been a strength of MWPH's outpatient rehabilitation team in Prince George's County, and the hospital is pleased to be able to continue that important work in the new location.

The facility is located within walking distance from a Metro station and has shops and restaurants close by. The central location makes it easier for working parents to spend as much time as possible with their hospitalized children, and it makes outpatient appointments more convenient as well.

"Our long-term goal is to be able to expand and offer more services to better support the southern regions of Maryland," Neidig said. "I have no doubt that with this new location and all the amenities that it has, we will be able to do that."

Looking Ahead

In both locations, our teams are settling into their new work environment as they continue to provide excellent care to children with complex medical needs. MWPH is continuing to plan for future growth and expansion, meeting more of our community's needs and helping more children each year. Thanks to our dedicated team and committed supporters, the hospital's future will surely bring more "adventures in space."



New Grant-Funded Trauma Program Shoots for the Moon

Dr. Lindsay Gavin leads the MWPH Behavioral Health team in building support for youth who have experienced trauma.

MWPH's psychology department has many years of experience treating children who have been the victims of traumatic experiences, and we have seen the need for pediatric trauma treatment continue to grow in the community. That's why it's so important that MWPH, in partnership with generous funders, is developing its pediatric trauma psychology program.

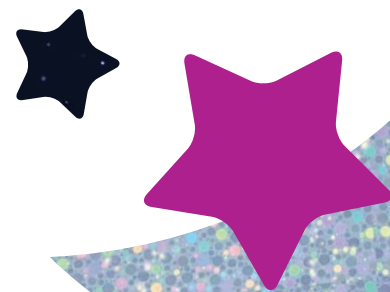
"We are so delighted and grateful to have the community's support in creating this new program. Community leaders have recognized that trauma is a crisis for so many children in our area, and our funders understand that MWPH has the knowledge, the passion, and the capacity to help these kids," said Jill Feinberg, MWPH's vice president of development and external affairs.

We are honored that our hospital's supporters have recognized both the need for this program and MWPH's unique expertise in this field. This program represents a collaboration with the hospital and community funders, with founding grants from the Hoffberger Foundation and the Crane Foundation.

"Children's mental health is a major focus area for the Hoffberger Foundation right now. We wanted to find Baltimore-area partners that are major institutions and innovators at the same time, and that's not always easy to find," said Terrill North, executive director of the Hoffberger Foundation. "We're focused on developing our knowledge in this area, and we are intentionally learning about mental health and trauma as we fund it. It's really valuable for us to find partners like MWPH that have multilayered experience."

Dr. Lindsay Gavin Provides Outstanding Leadership

The program is led by licensed clinical psychologist Lindsay Gavin, PhD. Dr. Gavin's interest in trauma drew her to the field of psychology. She completed her psychology externship at MWPH and went on to pursue additional postdoctoral training. Along the way, Dr. Gavin also completed training in specific, evidence-based



interventions for trauma. She earned her master's in clinical psychology from Loyola University Maryland and a PhD in clinical-community psychology from the University of Maryland Baltimore County. After her postdoctoral fellowship, Dr. Gavin stayed on at MWPH as a faculty member.

"We're so pleased that Dr. Gavin has demonstrated the knowledge and leadership to get this program off the ground, and we couldn't be more confident about her ability to bring this program out into the community," said Kenneth Gelfand, PhD, manager of MWPH's psychology program.

Developing a specialty program is critically important in helping children heal after psychological trauma. Treating trauma is not like treating other psychiatric conditions, and if a clinician treats a child with trauma without a solid foundation in trauma training, the child can be harmed rather than helped. Children who have been the victims of trauma experience a specific set of symptoms, and there are specific, evidence-based interventions that are the gold standard of trauma treatment.

Gavin adds, "It is impossible to talk about trauma in Baltimore without addressing the significant disparities

that exist because of racial inequity. As a result, much of our work will focus on racial equity and healing, and ensuring that all residents have access to our services."

Dr. Gavin sees the value of her work not only in helping individual children, but also in building MWPH's capacity to provide trauma-focused interventions that will help exponentially more children heal. "I saw the need in the community, and I wanted MWPH to build its capacity to address trauma and expand what we could do for these children," Dr. Gavin said. "The first step is to formalize and centralize our work around trauma with training in order to build competence and capacity in these interventions."

As a clinical and community psychologist, Dr. Gavin is dedicated to developing a community-oriented program that expands beyond the hospital's walls. She was recently sworn in as a member of the newly formed Baltimore City Trauma Informed Care Task Force, as part of the Elijah Cummings Healing City Act, and will serve a four-year term helping Baltimore become a trauma-informed city. MWPH's program will include partnerships with community organizations that are addressing trauma in the community in order to identify gaps and determine how to best fill them.

Through Dr. Gavin's work on the task force and other efforts, North notes, the program's best practices will extend beyond MWPH and spread through the city as a whole. "One exciting part for us is how Dr. Gavin's lived experience has informed her professional path. We were looking for ways to dig deep into the community and build stronger relationships on a neighborhood level and on a racial equity level. MWPH, and Dr. Gavin's work in particular, was a great fit."

“

The first step is to formalize and centralize our work around trauma with training in order to build competence and capacity in these interventions.

Lindsay Gavin, PhD
Licensed Clinical Psychologist

”

More than
25%
of American youth
experience a serious
traumatic event by
age 16.





Our Shining Star

“MWPH fills a very specific need, helping children with complex health conditions. There is no other facility in the area that does the work MWPH is doing.”

Marsha Stoller

Marsha Stoller, Trustee of the Jack & Mae Rosenberg Charitable Trust, helps the hospital aim high.

Baltimore has always been close to Marsha Stoller’s heart. Marsha and her late husband, Herbert, grew up in the Pimlico neighborhood. She was involved in children’s health care during her career as a speech-language pathologist and audiologist with the Baltimore County Department of Education, and she visited the Mount Washington neighborhood as part of her work.

Marsha and Herb married in 1972 and Marsha moved to New York City, where Herb was a partner in a corporate law firm with many clients in the commodities business. One of those clients was Hans Rosenberg – Jack, to his friends. Jack immigrated from Europe as a young man and built his fortune in the international coffee business. Although he and his wife Mae did not have any children of their own, Jack was dedicated to helping children in need throughout his life. When the Rosenbergs decided to establish a charitable trust for their estate, they turned to Herb for help. Herb made sure that after Jack and Mae passed away, their legacy would live on through the Rosenberg Charitable Trust.

“Jack and Mae Rosenberg were such generous people, and Jack was committed to using his legacy to help children without families or resources. He trusted Herb to find the right vehicle through which he could make a difference for children,” Marsha said.

Nevertheless, Herb might not have connected Jack with MWPH had it not been for Marsha’s best friend – and MWPH honorary trustee – Carole Sibel. “Carole’s name was synonymous with philanthropy. She was an expert at connecting people who had philanthropic goals with organizations that would make the best use of the funds,” Marsha said.

A former MWPH board member, Carole championed the hospital as the right beneficiary for the Rosenbergs, and it fit their area of interest and their desire to put their money to good use. “The mission mattered most to Jack – it had to be something that helped children. And MWPH was a great match for that,” Marsha said.

In the late 1990s, Carole invited Marsha and Herb, now the Rosenberg trustee, to take a tour of MWPH’s Rogers Avenue campus to discuss the hospital’s need for an outpatient medical building. The Rosenberg Charitable

Trust made its first transformational gift of \$1 million to MWPH in 1998, and the Jack & Mae Rosenberg Outpatient Center was born. Twenty-two years later, the Rosenberg Charitable Trust gave a second \$1 million gift to launch the expansion of the building in order to serve thousands more children each year.

Herb passed away in 2020, and Marsha chose to honor his legacy with a third \$1 million gift to fund the Herbert Stoller Innovation Fund, an endowment to fund innovative programming to help children normalize their hospital experience – and maybe even have a little fun along the way. The fund will be used for rehabilitation equipment that feels more like play, trips for teens to the National Ability Center in Utah, an art therapy program, and more.

“MWPH fills a very specific need, helping children with complex health conditions. There is no other facility in the area that does the work MWPH is doing,” Marsha said. “In addition to the importance of the mission, MWPH is so well-run. It has a stellar reputation. It makes me smile to know that Jack and Mae would be so proud to see their name on an institution dedicated to making sure no children are forgotten.”



Major donors and staff celebrating the opening of the expansion of the Rosenberg Outpatient Center.



A Universe of Ways to Reduce Pain

Finding new pain management techniques and innovations continues to be a top priority for MWPH.

According to the Meg Foundation for Pain, 63 percent of kids have a fear of needles. Needle phobia can cause people to delay important medical care throughout their adult lives – including getting vaccinated against COVID-19 and other deadly diseases. However, there is much that pediatric health care providers can do to reduce the fear and distress related to medical procedures – and by doing so, set children up for a healthier life. At MWPH, our robust pain management program uses a variety of innovative tools and techniques to manage both acute (short-term) and chronic (long-term) pain.

“In health care, broadly speaking, we certainly undertreat children’s pain. That is problematic, because repeated pain is traumatic and teaches a developing brain to

be more sensitive to pain,” said Julia Rosenstock, MD, attending physician at MWPH. “So, in effect, we are treating people who experience more pain, are more at risk for chronic pain, and are more sensitive to pain. But that’s not how it has to be – there are many things that health care providers can do to make it better.”

At MWPH, we’re committed to minimizing pain for our patients, because we know that reducing pain for our pediatric patients can have a positive, lifelong effect on their well-being. “While we can’t necessarily eliminate all pain, we can take steps to eliminate all unnecessary pain – and we should,” said Elizabeth Getzoff Testa, PhD, MWPH senior psychologist.

MWPH’s team uses a variety of preventative techniques, including comfort positioning; breathing exercises; biofeedback; numbing cream; dry needling, an acupuncture-like technique that treats painful trigger points; and Buzzy Bees, a vibrating, bee-shaped tool that confuses the nerve so that the painful sensation doesn’t reach the brain. “Distraction kits” with toys and activities are positioned throughout the hospital, and every staff member carries a “distraction card” with a “can you find?” picture and questions to ask.

“

While we can’t necessarily eliminate all pain, we can take steps to eliminate all unnecessary pain – and we should.

Elizabeth Getzoff Testa, PhD
Senior Psychologist

”

The hospital’s two new Vectas – the “lights and bubbles machines” – are great vehicles for pain management through distraction. These entrancing machines, funded by the MWP Foundation, feature mesmerizing tubes with all sizes and colors of bubbles that go up the tube, then gently drift down. The bubble tube can be lit up with different colors, and a projector can display moving scenes or play music. The Vectas also have fiber optic strands that change color slowly, which the patient can hold or play with. They provide distraction and give the patient control, both of which are powerful pain-reduction strategies.

Hypnotherapy is another highly effective pain management technique, particularly for children, whose imaginations make them better than adults at using hypnotic analgesic techniques. One example is “the Magic Glove,” a powerful exercise in which children imagine that their hand is encased in a protective glove, enabling the child to be more in control of the discomfort. Using the Magic Glove, children can change the sensation so that the pressure or pain of a needle doesn’t bother them.

“It’s critically important for kids to have a sense of control and mastery over their bodies. Often, these kids have had experiences that they had no control over,” Dr. Getzoff Testa said. “Encouraging kids to advocate for themselves in terms of what works for them, and assisting them in being an active participant in their care, is invaluable.”



Tatiyana’s Story

Glen Oak resident Tatiyana Terrelonge, age 18, knows firsthand how effective MWPH’s pain management program is. In December 2020, she had major surgery to correct hip dysplasia, and for several months afterward, she battled repeated infections. She came to MWPH for inpatient hip rehabilitation after surgery, spending most of her senior year in the hospital.

“I had a wound with dressings that needed to be changed every Monday, Wednesday, and Friday. I was not used to pain and had never had to deal with such drastic changes in my life before,” Tatiyana said. The painful dressing changes were made even worse by the fear and anxiety she felt.

Tatiyana talked with MWPH’s child life team to learn what she could do to control the pain without medication. She tried several techniques to see what would work for her, including stress balls, listening to music, deep breathing, and talking with her boyfriend while he held her hand. She also found the Vecta machine helpful. “The machine helped me not to focus on the pain, because it’s very fun. I was so mesmerized by the bubbles that I didn’t realize my dressing change was complete until they told me I was done. It was fascinating,” she said.

Having a range of pain management methods at her disposal gave Tatiyana an empowering sense of control. “I liked figuring out what method worked best for me,” she said. “Giving kids options allows them to discover what works best for them and what will make them feel better. You don’t have to give them medicine – you can just work with what makes them happy.”

Tatiyana was discharged from MWPH in late March of 2021 and continues to come to MWPH for outpatient rehabilitation. She is attending college this fall, taking the strategies she has learned at MWPH with her as she moves into the next phase of her life. Among the fields of study she is interested in? Pediatric nursing. “If I can help kids feel better when they are at their lowest, that would be a great career for me.”

Mt. Washington Pediatric Hospital is a place where children with complex medical conditions can get the integrated care they need.

We're different from acute care hospitals that focus on emergent conditions; we're a specialty hospital that helps children recover from illness and injury. From quick outpatient visits to longer stays, we're here to support children's healing, to get them back home, back to school, and back to their lives. MWPH's multidisciplinary team works with both the child and the family to create a supportive and healing environment both here and at home.



Accreditations

Our accreditations include:

- The Joint Commission
- College of American Pathologists (CAP)
- CARF International—the Commission on Accreditation of Rehabilitation Facilities – for the Comprehensive Integrated Inpatient Rehabilitation Program and Pediatric Specialty Care
- American Psychological Association (Psychology Internship)
- The Johns Hopkins Pediatric Sleep Center at Mt. Washington Pediatric Hospital is also certified by the American Academy of Sleep Medicine.
- The Child Life Program at MWPH has been granted accreditation by The Association of Child Life Professionals.

Inpatient Services

The Lawrence C. and Sheila S. Pakula Center for Infant Specialty Care (CISC)* serves babies who no longer need to be in a NICU, yet need a medically stable environment to ensure their growth, feeding, and readiness to go home. Our staff treats babies who are born prematurely, with feeding issues or pulmonary disease, or are weaning off of medication. Our goal is to prepare babies and their families to go home together.

The Pediatric Complex Care Program* transitions children with chronic or complex medical illnesses to home. While assisting children in becoming medically ready for life at home, MWPH provides families the knowledge and skills to meet all complex care needs.

The Physical Medicine and Rehabilitation Program helps children recover from traumatic injuries, illness or surgery, such as limb reconstruction following multiple fractures, post-surgical orthopedic rehabilitation, management of burns or wounds, neurological disorders, spinal cord injury, amputation or brain injury.

Day Programs

Our Hospital Day Programs provide daytime treatment for children who require intensive interventions for rehabilitation or feeding needs and incorporate therapies and medical treatment with meals, educational services and other activities.

Outpatient Services

Specialized pediatric outpatient clinics and services are available in our Rosenberg Outpatient Center.

- Autism Spectrum Center*
- Balance
- Brain Injury*
- Burn and Wound Care
- Cardiology
- Concussion Evaluation and Management
- Dermatology
- Developmental Disorders*
- Diabetes Management*
- Endocrinology
- Feeding Day Treatment Program
- Feeding Evaluation
- Fiberoptic Endoscopic Evaluation of Swallow
- Gastroenterology
- Gynecology
- Lead Poisoning
- Learning Assessment Center
- Movement Disorders
- Neurodevelopmental Services
- Neuropsychology
- Nutrition Services
- Nutritional Rehabilitation
- Orthopedics
- Psychiatry*
- Primary Care
- Psychiatry
- Psychology*
- Pulmonology
- Radiology Services: Digital X-ray, Gastrointestinal Contrast
- Rehabilitation: OT, PT, Audiology, Speech and Adaptive Equipment**
- Sleep Testing and Evaluation
- Studies and Swallow Studies
- Weight Management and Healthy Living

*MWPH services also offered at UM Capital Region Medical Center.

♦MWPH services also offered at Mt. Washington Pediatric Community Rehabilitation Services in Harford County.

A Year of Caring



Alison Cohen at 2019 Storybook Gala

Alison Cohen: Mission Control

Alison Cohen, Vice President of Priority 1 Automotive Group, connected with MWPH when Priority 1 first sponsored the Storybook Gala in 2015. Since then, she’s grown her support of the hospital by serving as the chair of the 2019 Gala, the virtual Gala celebration in 2020 and the 2021 online auction. Her commitment to MWPH and its mission grew when Alison joined the MWP Foundation Board in July 2020.

Due to the COVID-19 pandemic, the 2020 Storybook Gala could not be held in person. Alison used her creativity and passion for MWPH to orchestrate three separate virtual “gala events”, with the largest being the virtual Spoonful of Storybook Celebration this past November, which included a massive silent auction and fun online dance party. This virtual gala was the most successful gala to date, raising a total of more than \$390,000. Multiple community fundraisers were held to raise additional funds, including “March into Fitness” a special event that totaled over \$1,500. The hospital is grateful to Alison. Cohen for her continued support and her dedication to the mission of MWPH.



Giving Tuesday 2020 partially supported the EAF.

Out of This World Support

MWPH is a hospital where employees feel like family. When COVID-19 hit, it brought challenges on every level, from navigating new ways of working to dealing with personal struggles. To ease colleagues’ stress and anxiety, MWPH established the Employee Assistance Fund to provide emergency financial assistance to MWPH team members.

Knickkia Johnson-Hall, the manager of the outpatient prior authorization department, serves as the chair of the Employee Assistance Fund committee. “It’s a wonderful program, especially in the time of COVID-19. There are so many things that can impact employees at work, so giving people access to assistance is great.”

The Employee Assistance Fund is primarily funded by MWPH employees, including staff participation in MOVE Maryland this past year which raised more than \$4,600.

EMPLOYEE ASSISTANCE FUND

\$23,638
Total amount raised

\$202
Average gift

68
of employees who have contributed

Our Youngest Philanthropist Superstars

Special thanks to these 3 young philanthropists for hosting a lemonade stand benefiting MWPH! Leo (8), Kyle (7) and Gavin (6) raised \$411, which will do so much to help the kids at MWPH continue on their journey to healing.



A huge thank you to Noah Satterlee (15), the founder of Noah’s Care Bags, who visited MWPH with a donation of 100 care bags for our patient families. Each bag includes toiletries and something sweet with a special message of encouragement from Noah.



Special thanks to Jackson and Cooper Armacost and friends who stuffed dozens of stockings for our drive thru toy shop!



Giving Tuesday
\$44,937
Raised in 2020

123
Staff gifts



“Mt. Washington is a very special place for me. In my time of need, I found a job that not only helped me financially and helped me grow as a person, it also gave me a family. I give because I am forever grateful.”

Sally De Arruda
Language Services Mahager and Donor

Year in Review

Parenting During a Pandemic (July)

Dr. Richard Katz, Chief Medical Officer at MWPH, and Andrea Brown-Gee, MWP Foundation Board Member, led a special virtual Q&A session to answer questions to help navigate parenting (and grandparenting) during COVID-19.



MWPH Blood Drive (September)

Our first ever MWPH blood drive at Arlington Elementary School was a success. Thank you to all who came out to donate.



Holiday Toy Drive Thru (December)

Our Drive Thru Holiday Toy Shop was a great success! With the help of our generous community, despite the pandemic, we were able to provide over 5,500 toys, 2,800 diapers and wipes, and so much more for 309 grateful families.



Rosenberg Expansion Opens (February)

After months of hard work, our Rosenberg Outpatient Center expansion officially opened. We're now able to provide more than 15,000 additional patient visits annually.



Top Nurses (May)

FIVE of our MWPH nurses were recognized as Top Nurses by Baltimore magazine—these nurses comprised 5 out of 7 in the pediatric nursing category! Congratulations to Heather Dewan, Yaffa Elefant, Agnes Ihediohanna, Erica Jones and Colleen Neidig.



Fred Wolf Tree Dedication (June)

In June, we dedicated a tree on our campus in honor of Fred Wolf, who has been the Hospital Board chair three terms and the Foundation Board chair for one term. Thank you for your service, Fred!



Speak Now for Kids (August)

MWPH participated in Speak Now for Kids Advocacy Day with the Children's Hospital Association. This year, our young advocates, Joseph and Maliyah, had meaningful virtual meetings with members of congress.



Spirit Halloween (October)

We are so grateful for our partnership with Spirit of Children! In October, our patients and their families received costumes, crafts and goodies sent by Spirit of Children so no one would miss Halloween.



Giving Tuesday (December)

Our staff is INCREDIBLE! This year's Giving Tuesday raised a total of \$44,937 for the hospital and the children we serve.



Annual Golf Tournament (April)

We were thrilled to be able to hold our annual Golf Tournament earlier this year, presented by Raskin Global. Thank you to all the sponsors, golfers and volunteers who made the event a huge success!



Car Seat Giveaway (May)

Through the generous support of Go Insurance, MWPH's Community Benefit Program was able to distribute 150 infant, convertible and booster seats to those in underserved Baltimore communities.



Capital Region Medical Center Opens (June)

MWPH celebrated the opening of our new Prince George's County location, within the site of the brand-new University of Maryland Capital Region Medical Center. MWPH will continue to meet the growing needs of the community, offering the same excellent, personalized inpatient and outpatient care, now in a new cutting-edge space.

Volunteers

THANK YOU! Your dedication helps make a difference in the lives of so many children.

- Alli Abarbanel

Maie Abdel-Wahab

Sandra Adams

Tanya Adcock

Oluwaseyi Ajayi

Zahra Alam

Ivy Ammann

Natasha Anderson

Beth Armacost

Carrie Arnold

Terry Arvidson

Lindie Ashman

Stephanie Bagley

Neha Bair

Sydney Ballenger

Jamie Bandelin

Katie Bankard

Nancy Bergman

Natalie Bissonnette

Rose Blakely

Daniella Bloch

Rachel Bloom

Allison Booker

Abby Breen

Nancy Brown

Amanda Buchanan

Ryan Burton

Frank Callender

Julia Cameron

Averi Cannon

Kelli Caponi

Danielle Chapman

Rohit Chari

Fatima Choudhary

Cale Christensen

Alyson Cockrell

Alison Cohen

Kate Cohen

Matthew L. Cohen

Anne Conklin

Lori Connolly

Cathy Costa

Genna Cowan

Sherry Cronin

Sharon Crook
- Shannon Darlington

Karen Davis

Susan Davis

Nancy Delach

Barbara Dent

Darryl Despeaux

Anjali Devireddy

Meghan Deyesu

Melis Dik

Sandra Drury

Elizabeth Dua

Kelly Dunworth

Thomas Ellis

Songholi Enwezoh

Joyce Carla Farrington

Payton Flores

Dan Fulmer

Devorah Furman

Courtney Furrey

Sharon Gensler

Joyce Geppi

Margo Gerke

Jessica Gertz

Samhita Ghorakavi

Beatrice Gigliotti

Sarah Glazer

Terry Golaner

Ellen Gold

Phyllis Goldberg

Beverly Gordon

Gilda Gordon

Cionne Gourrier

Susan Grill

Lindsey Guevel

Mahlielt Hailu

Brenda Harris

Mikayla Harris

Chrissie Heimer

Barbara Henschel

Heather R. Hoffman

Veida S. McCampbell

Gabrielle Horchos

Brian A. Horn

Vincent Hou

Yanxiang Hu
- Jesse Huang

Maheen Ibrahim

Lori Isaac

Cajay Jacobs

Mary Jacobs

Rachel Jarvis

Julienne Joab

Christine Johansen

Amber Johnson

LaNeigh Jones

Mustapha Kah

Kathryn Kaligian

Melanie Kelleher

Rachel Kennedy

Sandra Kenny

Meghan Kieffer

Shatera Kimbrough

Vivian Kipperman

Janet Klein

Mike Klugo

Autumn Kramer

Susan Kraska

Julie Krivak

Shivani Kumaresan

Danielle Laureta

Jo-Ann Lecates

Jacquelyn Leffel

Catonya Lester

Alyssa LeVie

Nancy Lillibridge

Kathleen Lindenstruth

Marian Lipinski

Howard Maleson

Hassan Malik

Dina Malkiewicz

Coleman Manning

Jessica Markison

Sheree Martin

Emily Mast

Amanda Maytin

Veida S. McCampbell

Raymond E. McCoy

Abigail McKenna

James McKenney

Brianna McKeough



- Gail McLean

Kayla McNamara

Joseph McNeas

Mary Denise Messineo

Caroline Miller

Jim Mitich

Brendan V. Moag

Christine Moag

Jaclyn Morgan

Randy Morgan

Susan Morrison

Barbara Moynihan

Olivia Mulhern

Sarika Mullapudi

Carol Murray

Thomas Murtaugh

Kelly Myerson

Sibani Nachadalingam

Sherry Nachman Kurland

Jasmina Naum

Gisselle Negron

Nicole Nesbitt

Cherie Nichols

Stephen Nichols, MD

Chinazaeckpere Nwanka

Corinne O'Brien

Dorothy O'Brien

Taylor Ogrysko

Laurie Okin

Danielle Onheiser

Frank R. Palmer

Eleni Panagopoulos

Pooja Patel

Christy Pazzanese

Xiwei Peng
- Lauren Pertin

Ashley Pham

Kayla Pindell

Kathy Poehler

Anne Powell

JoAnn Presbitero

Emma Rabinowitz

Kathy Raskin

Leonard Raskin

Rachel Reid

Sharon Rigali

Jeanette Rockefeller

Troy Rodgers

Jake Rodriguez

Grace Roseme

Karen Rosenberg

Stephanie Ross

Sharman Rowe

Jane Sacks

Tony Salters

Hadia Saroya

Elizabeth Scherr

Julie Schoonover

Tracey Schultz

Ava Schwartz

Julia Senkowsky

Kritisha Shrestha

Morgan Sigur

Paige Sim

Barbra Skarzynski

David Slotnick

Beatrice Smith

Jazmiera Smothers

Kendra Soh
- Rebecca Sosa

Ashley Spear

Cheryl Spedden

Kylie Sprague

Brandyn Stein

Susan Stein

Johanna Stenberg

Rebecca Stevenson

Cynthia Strachan

Anita Stroud

Angela Sun

Haichun 'Helen' Sun

Bailey Susic

Elizabeth Tandilashvili

Elena Taylor

Syona Tuladhar

Mike Turner

Gianna Vacca

Alycia VanHorn

Laurence Wechsler

Kathleen Wetzel

Cameron White

Inez Wiggins

Barbara Wilson

Laurie Wingate

Lila Wisotzki

Lynn Witkin-Weinstein

Claudia Wong

Ming Wu

Tam Young

Angelita Yu-Crowley

Julia Zaki

Angela Zambito

Development Committee

Our team of active and engaged volunteer leaders help MWPH identify and connect to community resources.

- Michael A. Allen

Matthew L. Cohen

Rebecca Cohen

Venetta Conley

Richard A. Eliasberg

Sonya Goodman

Benjamin K.-Greenwald

Talia Greenwald

Chrissie Heimer, RN

Sandra D. Hess

Heather R. Hoffman
- Harper Johnston, PhD

Jessica Markison

Christopher Mason-Hale

Veida McCampbell

Phyllis C. Meyerhoff

Errine O'Brien

Sam Oshrine

Lawrence C. Pakula, MD

Lauren Pertin

Ronald R. Peterson

Hayley Evans Polansky
- Beryl J. Rosenstein, MD

Courtney Shampaine

Blake Sheehan

Hanan Sibel

Sheldon J. Stein

Roslyn Stoler

Bailey Susic

David Volosov

Alyssa Williams

Brandon Williams

Laurie Wingate

Horizon Society

The Horizon Society recognizes supporters who have included Mt. Washington Pediatric Hospital in their estate plans. The following are members of the Horizon Society:

- Catherine Wickes Alexander*

Florence H. Austrian Trusts*

M.E. Callaway Memorial Fund*

Ella M. Cohen*

Amelia D. and Albert D. Cover Endowment Fund*

Florence R. Crawford*

Lillian Denison*

Barbara Dent

Rich and Susan Dubroff

Louis & Hortense Kahn Eliasberg Memorial Fund*

Samuel and Margaret Gorn Foundation, Inc.*

The Solomon, Theresa and Maurice Greenwald Memorial Fund*

Sandra D. Hess

Lucille B. Holloway*

Clark and Jodi Lare
- Bennett Linton*

Harry E. Merriken, III and Mary Merriken

Mary D. Miller and Charles S. Hirsch

Thomas S. Paullin

The John Clarence and William Carroll Redman Endowment Fund*

Marie V. Rice*

Carol F. Rosenberg*

Erna B. Schoenberg*

Sheldon and Susan Stein

George L. Stern*

Naomi Ruth Markley Webster*

John and Margaret Wilhelm*

The Helen C. Williams Fund*

Elizabeth Alice Wolf*

Judith Woody*

*Deceased

For more information about becoming a member of the Horizon Society, please call Jennifer Meyerhoff, Director of Major Gifts, at 410-578-5038.



Mary Miller, Charles Hirsch and family.

I am constantly impressed by the clinical staff at MWPH. With their knowledge, skills and dedication, they go to great lengths every day to maximize the health and independence of the children we serve. We wanted to do our part to help them take care of our patients and families now and into the future.

Mary Miller



Multi-Year Pledge Donor List

MWPH expresses gratitude to the following individuals, corporations and foundations who have given or pledged multi-year gifts of support. We gratefully acknowledge their generosity.

- Anonymous (4)

Michael and Beth Armacost

Alan and Ann Betten

Andrea Brown-Gee and Stephan Gee

Benjamin Carson, Jr. and Merlyn Carson, MD

Matt and Rachel Cohen

Zachary and Kate Cohen

Kevin and Anne Conklin

S. Tracy Coster

D.F. Dent & Company, Inc.

David and Zhanna Dalsheimer

Eliasberg Family Foundation, Inc.

Thomas and Monica Ellis

Jill Feinberg and David Fishkin

France-Merrick Foundation

Francis X. Gallagher, Jr.

Travis Ganunis, MD and Ruth Ganunis

Kenneth Gelfand, PhD and Jennie Gelfand, PsyD

James J. Gordon and Noah S. Kodeck

Ben Greenwald

The Louis H. Gross Foundation, Inc.

Hearst Foundations

Sandra D. Hess

Heather R. Hoffman

Harper Johnston, PhD

Richard M. Katz, MD and Martha Lessman Katz

Virginia A. Keane, MD and Christopher Carver

Cindy Kelleher and Gary Farmer

KELLY Benefit Strategies
- John and Tee Kelly

M&T Bank

Macht Fund of The Associated

Jessica Markison

Harvey M. Meyerhoff Fund

Harvey M. and Phyllis C. Meyerhoff

Jennifer L. Meyerhoff

Mary D. Miller and Charles S. Hirsch

Tom and Crissy New

Stephen Nichols, MD and Gerri Nichols

Lawrence C. Pakula, MD

Edward Perl, MD and Susan Perl

Ryan and Lauren Pertin

Ronald and Elizabeth Peterson

Mark and Denise Pudinski

Quotient, Inc.

Brett and Vicky Rogers

Beryl J. Rosenstein, MD and Frona A. Brown, EdD

Nirav Shah, MD and Parul Shah, MD

Blake Sheehan

Hanan Sibel

Kevin W. Sowers MSN, RN, FAAN

Brad and Justina Starobin

Sheldon and Susan Stein

Leonard and Roslyn Stoler

Verdence Capital Advisors

David and Tamar Volosov

The Whiting-Turner Contracting Company

Fred and Peggy Wolf

Jerry Wollman and Eve Zimmerman



Honorary Trustees

Edward D. Burger*
Richard A. Eliasberg
Nancy Gephart*
Sonya Goodman
J. Alex Haller, Jr., MD*
Margot Heller
Sandra D. Hess
Melvin L. Kelly

Misbah Khan, MD, MPH
Gerald M. Loughtin, MD
Phyllis C. Meyerhoff
William M. Passano, III
E. Allen Robinson*
Carole Sibel*
James R. Walker

Mt. Washington Pediatric Foundation Board of Trustees

Beth Armacost
Ann Eliasberg Betten*
Rachel Bloom
P. David Bramble
Andrea Brown-Gee, MA
Benjamin Carson, Jr.
Alison Cohen
Matthew L. Cohen*
Kevin Conklin (1st Vice Chair)
Travis Ganunis, MD, FAAP
Jim Gordon

Ben Greenwald
Kevin Hollins
Dan Joerres (2nd Vice Chair)
Thomas J. New
Edward L. Perl, MD, FAAP
Lauren Perlín (Chair)
Nirav G. Shah, MD, FCCP
Blake Sheehan (Treasurer)
Sheldon J. Stein (Ex Officio)
Roslyn Stoler (Secretary)
Fred Wolf III, Esq. *

Mt. Washington Pediatric Hospital Board of Trustees

S. Tracy Coster*
Steven J. Czin, MD
Karen E. Doyle, MBA, MS, RN,
NEA-BC, FAAN
David Hackam, MD (Vice Chair)
Cynthia Kelleher, MBA, MPH
Mark R. Marcantano, Jr.
Margaret Moon, MD, MPH

Lawrence C. Pakula, MD*
Lauren Perlín (Ex Officio)
Beryl Rosenstein, MD*
G. Daniel Shealer, Jr. *
Kevin Sowers, MSN, RN, FAAN
Roslyn Stoler (Secretary)
Mohan Suntha, MD, MBA
Fred Wolf III, Esq. (Chair)

Mt. Washington Pediatric Hospital Executive Council

Thomas J. Ellis
Vice President, Human Resources

Jill Feinberg
Vice President, Development and External Affairs

Richard M. Katz, MD
Vice President, Medical Affairs and CMO

Mary Miller
CFO & Vice President, Finance and Business Development

Denise Pudinski, MSHCA, BSN, RN, NE-BC, CCM
Vice President, Patient Care Services/Chief Nurse Executive

Justina Starobin
Vice President, Outpatient Services

Sheldon J. Stein
President and Chief Executive Officer

*Deceased

*Former Chair



Annual Fund Donor List

Mt. Washington Pediatric Hospital gratefully acknowledges gifts made between July 1, 2020 and June 30, 2021. If we have made an omission or an error, please contact us at 410-578-5315 or development@mwph.org so that we can correct our records.

★ DREAM MAKER

(\$1,000,000+)
Jack & Mae Rosenberg Charitable Trust

★ HAPPY HILLS SOCIETY

(\$100,000-\$499,999)
Eliasberg Family Foundation, Inc.
Harvey M. Meyerhoff Fund
Lawrence C. Pakula, MD

★ HEAL AND GROW SOCIETY

(\$50,000-\$99,999)
Hoffberger Family Philanthropies
The John J. Leidy Foundation Inc.
Maryland Department of Housing and Community Development
Middendorf Foundation, Inc.
Annette Pakula
Brett and Vicky Rogers
Beryl J. Rosenstein, MD and
Frona A. Brown, EdD
Ruth Carol Fund, Inc.
Spirit Halloween Superstores, LLC

★ FOUNDER'S CIRCLE

(\$10,000-\$49,999)
The Kenneth S. Battye Charitable Trust
The Jess Carson Foundation, Inc.
Chris and Vicky Compton Charitable Foundation
The Charles Crane Family Foundation
Go Insurance
H&S Bakery, Inc.
Harford County Government
Sandra D. Hess
JM&A Group
Johns Hopkins Medicine
Cindy Kelleher and Gary Farmer
Macht Fund of The Associated
MCB Real Estate, LLC
The Morris A. Mechanic Foundation, Inc.
Jennifer L. Meyerhoff
NFM Lending
Priority 1 Automotive Group
Raskin Global
Nora Roberts Foundation
The Rothschild Foundation, Inc.
Ronald Silverman, MD and Penny Brown, MD
The Traffic Group, Inc.
The Whiting-Turner Contracting Company
Thomas Wilson Foundation
Susan A. Wolman and Family

★ PARTNERS IN HEALING

(\$5,000-\$9,999)
Big Steaks Management, LLC
Linda Carson
CCS Fundraising
Alison Cohen
Louis and Deborah Cohen
Covenant Guild, Inc.
Rich and Susan Dubroff

EMJAY Engineering and Construction Co, Inc.
Euler Hermes North America
Ben Greenwald
Heather R. Hoffman
Jessica Markison
Harvey M. and Phyllis C. Meyerhoff
Owens & Minor
Joshua and Rachana Patani
Point Breeze Credit Union
The Ravens Foundation
Jonathan Rosenstein
Blake Sheehan
Lanette Shockey
UBS - The Harris Gibson Group
University of Maryland Medical System
Verdenice Capital Advisors
Brandon and Alyssa Williams
The Arthur B. Wilner Foundation Inc.

★ CHAMPION'S CIRCLE

(\$1,000-\$4,999)
Acorn Alcinda Foundation Inc.
Aflac
The Agora Companies
Auto Solutions, Inc.
Joseph and Diana Allen
Anonymous (2)
Armstrong Dixon Advisor Group, Inc.
Leonard and Phyllis Attman
Scott and Janice Babus
The Baltimore Ravens
Greg and Jamie Bandelin
Bank of America Merrill Lynch
Scott and Marilyn Basik
Bay Country Professional Concrete, LLC
Bel Air Auto Auction
Alison Berry
Alan and Ann Betten
Alvin J. Biagas, Jr.
Jennifer L. Bowie
Timothy Brady
Paula Bragg
Jonathan Broh
Brown Advisory
Andrea Brown-Gee and Stephan Gee
Tamara Burgunder, MD and Tripp Burgunder
The Campbell Foundation, Inc.
Chi Sigma Sorority
Chris and Lee Cockrum
Marc and Jamie Cohen
Coldwell Banker Realty Cares Foundation
Collective RCM
Comprehensive Pharmacy Services
Constellation, an Exelon Company
Convergint Technologies
Elizabeth J. Day
Daycon Products
Heather Dewan
Alan J. Eade and Constance M. Duff
East Coast Building Services, Inc.

Eastern Atlantic States Regional
Council of Carpenters
Effectv - a Comcast Company
Enterprise
Exelon Foundation
Fick Bros. Roofing & Exterior Remodeling Co.
Jennifer Freeman
Dan Fulmer
Tere Geckle
Michael Glass Law Firm
Michael and Elizabeth Glass
Golfers' Charitable Association, Inc.
James J. Gordon and Noah S. Kodeck
Judah S. Gudelsky
Marc and Pamela Guest
David J. Hackam, MD
Kyle Harris
Randy and Amy Hart
Thomas and Lori Hauser
Timothy and Diane Hawes
Carson and Christine Heimer
Heritage Financial Consultants, LLC
The Michael S. Hollins Foundation
Johns Hopkins Children's Center
Harper Johnston, PhD
Gary and Patty Kain
Sarah Kelley, MD and Benjamin Kelley
KELLY Benefit Strategies
Kiwanis Club of Towson -
Timonium Foundation, Inc.

Len Kopec
La Scala Ristorante
Clark and Jodi Lare
The Law Office of Posner & Cord
Leach Wallace Associates, Inc.
Gerald Loughlin, MD and Barbara Loughlin
Jonathan and Beth Mayers
Joseph and Kristin McNeese
Harry and Mary Merriken
Alvin and Sue Miller
Harvey and Margaret Miller
Nick and Colleen Neidig
Network For Good
New Era Development, LLC
NOG Talent Solutions
Northrop Grumman
Oui Oui Music
Thomas S. Paullin
Penney Design Group, LLC
Tom Phelan
Quotient, Inc.
Leonard and Kathy Raskin
RCM&D
Richard and Sharon Rigali
Parker and Jeanette Rockefeller
Howard and Jodi Rosenberg
Sawyer Wealth Management
G. Daniel Shealer and Susie Chisolm
The Steven J. Sless Group
Slotnick Foundation
Carlton and Cheryl Smith
David D. Smith
Dee Anna Sobczak
STC Consulting Services, LLC
Summit Responsible Solutions
Mohan Suntha, MD, MBA
TEKsystems, Inc.
Lee Tessier
Ulman Foundation
United Way of Central Maryland
University of Maryland Baltimore Washington
Medical Center
Andy and Lauren Wayne
Dennis and Mandy Weinman
William Blair & Company
Windsor Electric Company, Inc.
Ellen Wingert
Fred and Peggy Wolf

★ CHAIRMAN'S SOCIETY

(\$500-\$999)
Anonymous (2)
Lisa Arce-Williams
Arnold Auerhan
Steven Band, PhD and Eve Band, PhD
Banner Masonry Corporation
The Benevity Community Impact Fund
Edith H. Bernstein
Steven and Rachel Bloom
Vera Bolling-Hammett

M. Gene and Patricia Bosley
Margaret Brothman
David W. Buck Family Foundation, Inc.
Michael Camp, MD and Shelly Camp
Carebridge Corporation
Chesapeake Telephone Systems, Inc.
Sara Chinnis
Cale and Jaimie Christensen
Jonathan Cohen
Joseph M. Collaco, MD and Aarti Shah
Steven J. Czin, MD and Teri Kahn, MD
Eric and Lacie DeCosta
William J. Dolan and Mary Jean Foggo
George Dover, MD and Barbara Dover
Epsilon
Steven Epstein, MD and Danielle Epstein
Exclusive Motorcars
Jill Feinberg and David Fishkin
Trey and Sarah Fisher
Flowers & Fancies
General Dynamics Information Technology
Gold and Company, LLC
Wes and Antoinette Guckert
H&E Equipment
ISI Demolition
Michele Jacobs
Andrea Laporte
Shirley Jane Lentz
David and Kathleen Lindenstruth
Michael and Karin Lombardi
Mark R. Marcantano, Jr.
Maryland Free State Post 167
Jewish War Veterans

Mason Dixon Chapter of N.C.R.S., Inc.
Mary Martino
Raymond E. McCoy
Matthew and Elena McDougal
McGrew Equipment Co.
Pierre and Sonrisa Medina
Adam and Barbara Miller
Mary D. Miller and Charles S. Hirsch
Margaret Moon, MD, MPH
The Mt. Washington Tavern
Bernard and Soozie Myers
National Corvette Restorers Society, Inc.
Stephen Nichols, MD and Gerri Nichols
David and Amy Noji
Nolan Financial Group
Stephen Oliner and Jane Epstein
Allan Pass, PhD and Lisa Pass
Adam Pattisall
Edward Perl, MD and Susan Perl
Alfred and Tammy Pietsch
Arnold and Marjorie Prada
R. H. Fewster Painting Co., Inc.
Elizabeth Robinson
Troy and Lynette Rodgers
Jules and Karen Rosenberg
Julia Rosenstock, MD and Mike Rund
Alistair Russell
Scaffold Resource, LLC
Frances and Howard Schloss Family
Philanthropic Fund
Ami Sebeck
Nirav Shah, MD and Parul Shah, MD
Smith & Downey, P.A.
Brad and Justina Starobin
Sheldon and Susan Stein
Teresa A. Taber
UKG
USNA Boys of '88
Verizon Foundation
Jason Wolcott

★ CENTENNIAL SOCIETY

(\$100-\$499)
Jay Abarbanel
Jeffrey and Sima Abarbanel
John and Susan Abosch
Derek Absher
Absolute Solutions and Associates
Absolute Supply and Services
Keri Acree
Janice M. Adams
Tanya Adcock
Erica Allen
Michael and Robin Allen
Sally C. Altman
Jay and Cyndi Alvather
AmazonSmile Foundation

Anonymous (6)
Tikee Aparece, MD and Greg Selby
Apollo Diversified Services LLC
Michael and Beth Armacost
Bradd and Monica Atkinson
Lisa Bailey
Cassandra Bains
Arthur Baitch, MD and Herta Baitch
Jennifer S. Baker
C. Gail Bassette
Beltway Cleaning Systems
Eric and Lauren Blum
Marc and Leonor Blum
Bolana Enterprises, Inc.
Jami Bonyun
Rosalind A. Bowman
Bo Brand
Dennis Brave, DDS and Ilene Brave
Albert and Tammany Buckwalter
Maria Bulla
Kevin M. Bullock
Joyce Ann Burman
Nancy Bush
Francis Callender
Laura Cancelliere
Katie Counselman Caple
Janet Carestia
Rachel Caudill
Gary and Carol Cayce
Celebrations, LLC
Edward B. Chambers
Lisa Charles
Sara Chase
Chesapeake Employers Insurance
Child Life and Therapeutic Recreation
Department at MWPH
Annette Civera
Arnold and Reba Cohen

Stuart and Gayle Erdman
Susan Evans
Kaitlyn Eyster
F.C. Clifford, Inc
Alecia Farley
Megan Feeley
Robert and Janice Feinberg
Ray and Robin Ferrara
Joel T. Fink
Scott and Allison Fishkind
Sharon Fitzmaurice
Robert and Holly Frisch
Travis Ganunis, MD and Ruth Ganunis
Kenneth Gelfand, PhD and Jennie Gelfand, PsyD
Lynn Gelston
Courtney Gengler
Ben and Faith Gershowitz
Sandra Levi Gerstung
Glenn and Gail Gitschier
Alex Goff
Victor Goodman
Charisse Gordon
Kathleen A. Gray
Gary and Joan Greenberg
Groshell Logistics, Inc.
Gross, Mendelsohn & Associates
Joshua and Amy Guerke
Kurt Hagel
Steve Halligan
Stephen Handelman
Terence Owen Hanley
Matt Hannigan
Harford Refrigeration Co., Inc.
Marilyn Harris
Lorena Hawkins, MD
Charles Heinle
John Heisler
Lewis and Lois Hess



Julian Cohen
Zachary and Kate Cohen
Sherri Cohen
Eileen W. Cohn
Christopher and Vicky Compton
Robert and Venetta Conley
Greg Connelly
Richard J. Coughlan and Deborah Helfeld
Mort and Linda Creech
Laurie Crowe
Cillian Daly
Burton Daniel
Elise Dausch
Andrew Davis
Sally De Arruda
Joseph and Nancy Delach
Barbara Dent
Anthony DiBartolomeo
James L. Dorman
Lynda Dorman
Anne Dorsey
Elizabeth Dua
Cynthia Edmonds
Electrico, Inc.
Jonathan H. Elkind and Suzanne Mintz
Ron and Chris Eller
Thomas and Monica Ellis
Leslie A. Engel and Sheldon Bolotin
William and Kathryn Ensor

Milt Hess
Michael and Barbara Hettelman
David and Bertha Hewes
Steven and Pennie Hinds
Katherine B. Hogan
Hoopla Hospitality
Edward and Eleanor Hord
Megan Howie
Douglas and Anne Huether
Stephen and Shawna Hulin
Tom Husson, Jr.
Michelle Imbach
Lauren Isaac
Anne Jamison
Edward Johnson
Jwahren Johnson
Pamela Johnson
Knickkia Johnson-Hall
Ann Johnston
Jeffrey Kahn, PhD and Orlee E. Kahn
Robert and Marcia Kargon
Arnie and Ellen Katz
Shirley Kaufman
Laura Keller
John and Tee Kelly
Gilbert and Maria Kennedy
Vivian Kipperman
Neal and Elaine Kitt
Rodney Klein

Chris Kopec
Vicki Kozlowski
Kaleb and Meredith Kroger
Patrick Krouse
Donald and Tina Kunkel
Shaun and Kayla Kupfer
Amy Lacock
Robert and Barbara Lagas
Eileen F. Lamasa
The David A. Lamdin Charitable Fund
Tyler Lanham
Karen Larsen
Leaders of Tomorrow Youth Center, Inc.
Karen Lelonek
Mary Beth Lennon
Mark and Jill Levin
Glynnetta Lewis
Morton M. Libov
Johanna Licharowicz
Kathy Lochary
Karen Loewenberg
Matthew Loraditch
Edward B. Lough
Jason and Bridget Lowy
Kyle Lowy, Gavin Lowy and Leo Sebeniecher
Jessica Maher
Rajul Maheshwari
Joanne A. Mandato
Coleman Manning
Joel and Carol Matz
Stephen and Georgia Matz
Gene McCollum
Bridget McGee
MCI USA
Stephen and Ellen McLaughlin
David Melnick
Kenneth D. Middleton
Adam and Merritt Miller
Carole Miller
Laurie Miller
Jeff and Gail Mitzner
Brendan and Christine Moag
Don Mohler
Carl A. Mueller
Michael Mullaney
Monna L. Nabers
Joann Naseri
Cheryl Neidig
William and Wanda Nelson
Ted Niederman
Myles and Julie Norin
Barbara Nosek
Harvey and Harriett Nusbaum
Eileen D. O'Brien
Seth and Laurie Okin
Danielle Onheiser
Thomas Ostrowski
Joseph and Brenda Pariser
Andrew Parker
Julie Patterson
Cardell Payne, Jr.

Betsy Pelovitz
Joseph Piskor, II
Liz Porter
Steve and Michelle Postol
Christine M. Prada Schultz
Shirley Price
Pro-Lawn-Plus, Inc.
Mark and Denise Pudinski
Christopher and Elizabeth Rahl
Jerome Reichmister, MD and
Susan Reichmister
Rachel Reid
Douglas and Valerie Reynolds
Katie Reynolds
Tracy Rinehart
Connie Rivere
Renardo A. Robinson
Burton and Betty Rosen
Paul M. Rosenberg
Gina Ross
Harold Rottman
Chandea Rowley
Brendan and Natalie Russell
Donald and Lorilyn Russell
Linda Ryder
Harold Ryman
Kathy Sacco
Debbie Sadlowski
Coleman Manning
John and Marcella Saneman
Lisa Saunders
Councilman Isaac "Yitzy" Schleifer
Brooke Schmelz
David and Sharon Selko
Lawrence and Rachael Serra
James and Carolyn Servance
Stephanie Shaffer
Donna Shapiro
Lewis Shapiro
Mark and Laura Shimkus
Ellwood and Thelma Sinsky
Diana Sipe
Karen Sirota
Laura Smith
Teresa Spinks
Earnie Standley
Michael A. Stoltz
Gus Stratakis
Anne K. Stratton
David M. Strouse
T Subah
Mark Sucoloski
Michelle Sudlow
E. Pete and Carol Summerfield
Amber Summers
Robert Sweeney
Claudia Swiecicki
T. Rowe Price
Denise Teague
Barbara Tejada
Susan Temple
Amy Terrones
Rick Thoeson
Ricky Thompson

Gary and Brenda Tine
Neil and Laura Tucker
Richard and Laurie Tucker
Michael and Denise Verzi
Charles Visconage
Brianne Wade
Louis Wade
Kelley Walter
Mark and Amanda Warner
Melanie Warner
Bryan Weisbrot
Erin Welch
Lou Westermeyer
Adam Westphal
Lacreasha Wheatley
Connie Rivere
Cora H. Williams
Daniel and Ellen Williams
Patricia A. Williams
Robert C. Williams, II
Silvia Williams, MD
Karen Willing, MD
Lisa M. Wilson
Jennifer Wingrat
Michael and Kelly Wissel
Teresa Witmer
Wurth Wood Group
John Xanders
Tonya Yarborough
Brent and Katie Yeager
Harrison Yeager
Steve Yelland
Mindy Zacks
Jonathan and Elizabeth Zader
Zarren Law Group
Erica Zippert and Alon Diamont-Cohen
Nello and Maureen Zuech

★ CIRCLE OF FRIENDS
(\$1-\$99)

Amanda Aberg
Jeffrey Adams
Sandra Adams
Debra Adler
Ajoke Ajayi-Akintade, MD and
Julius Akintade
Michele Allen
Richard Allison
Lynda Alper
Anthony Alston
KrisAnn Annulis
Anonymous (8)
Bruce W. Armstrong
Greg and Jennifer Armstrong
Christopher and Luann Awalt
Shena Bachman
Susan Austin Baetjer
David Baginski
Elizabeth Bailey
Barbara Baines
Ruth Bakal
Judith Bambace
Tifanie Barnett
Felina Basmaci
Christa Bay
Rachel Baye
Elizabeth Belt

Marianne Bergeron
Bernard L. Berkowitz
Lewis Berkwit
Beth El Early Childhood Programs
Janet Biles
Jeanette Bingel
Kimberly Bittinger
Teri Bixler
Clarissa Blake
Rose Blakely
Derek and Meredith Blottenberger
Seth and Bessy Blum
Thomas Bonomo
Reed and Allison Booker
Lois J. Bower
Allison Bowers
Connie Bowers
Clyde and Cheri Bragg
Brian D. Briscoe, MD
Laura Brodsky
Lauren Brown
Gail Brownley
Rich Brunner
Shawn Bryden
Julie Bural
Maggy Burgess
Buddy and Ginger Burr
James and Rena Campbell
James and Beverly Canatella
Miranda Candia
Elaine Carnesi
Twyla Cathion
Jason and Lory Cerato
Teara Chandler
Mary Chansler
Michelle Chudow, MD
Michael Ciattei
Roman Clark
Patrick Clifford
Sandra Cloude
Alfred and Renee Cohen
H. Jerry Cohen
Susan Cohen
Melissa Cole
ConnectYourCare, LLC
Michael and Lori Connolly
Carla Cook
Mike Cook
Barbara Corak
Pete and Corby Corbin
Steven Corbin
Carl and Faye Coscia
Liane Costello
Steven and Edie Creeger
Kathryn Crostic
Bernadette Crowder-Johnson, MD and
Charles Johnson
Kathleen Curtis
Elizabeth Bailey
Yvonne Daddieco
Randy and Mary Dalnekoff
Helen Damesyn
Dan Danaso
Kevin Darby
Tykell David
Harold and Lynn Davidov
John and Cheryl Davis
Kim Davis
Stephanie de Wit, MD
Ellen Deckelbaum
Jessica Decker
Stephanie Decker
Jason and Jacqueline Delman
Michelle Demeule-Hayes
Cheryl Dennis
Erin DeSantis
Betsy Diamant-Cohen
Sonya Dillon
Mark Dimmick
Heather Dinunzio
Monica DiVenti
Barbara Dubik
Patrick Dugan

John Duhamel
Robert and Michele Durham
Tiffany Dushel
Deborah S. Duvall
Karen Eagan
Robert and Sylvia Elliott
Jennifer Erhardt
Marianne Erlichman
Jamison Ernst
Mary Louise Eshel
Caren Evans
FactSet Research Systems Inc.
Karie Falck
Michael and Beth Falcone
Patricia Falter
Kim Feinberg
Patrick Fennell
Debra Fike
Rebecca Fink
Jack Finkelstein
Kris Fischer
Erin Fitzpatrick
Kristen Flemings
Jeneba Fofana
Jessica Folderauer
Susan Foltz
William and Robin Fox
Allison Francis
Andrew Freedman and JoAnn Presbitero
Suzie Freedman
Alexandra French
Charles J. Gambrell
Sharon Rae Gensler
Michelle Gentile
Alan and Beverly Gersh
Andrew Gill
Barry and Elaine Gittlen
Elizabeth Glazer
David and Terry Golaner
Louise G. Goldberg
Shelley Goldstein
Debra Sherson Goltz
David Goodell and Michelle Kimos
Jason Goodman
Steven and Gilda Gordon
Marci I. Gordon
Michael M. Grady
Grandizio, Wilkins, Little & Matthews, LLP
Jeffrey and Carly Greenberg
Howard and Edie Greenblatt
Irvin and Nanette Greif
Shaunta Griffin
Alan and Jean Grinspoon
Fern Grossman
Nancy Gunzelman
Cindy Guse
Deborah Hall
Calvin and Ina Hamburger
Richard D. Hanauer and Marcia L. Roseman
Jacqueline I. Hanover
Michelle Hanover
Gail Hardesty
David Harrah
Brad Harris, MD and Jessica Katznelson, MD
Carrie Hartin
Debbie Harvey
Gina Hebert
Beth Hecht
Emily Hecht
Jim and Debra Heckler
James Hedeman
Cassie Heffernan
Tom Hemenway
Ann Henderson
Shelley Hendler
Tracy Hep Brown
Caitlin Herman, PsyD
Deborah Herman
David Herring
David Hertzbach
Terry and Nina Hess
Patricia Hodge-Mack

Eddie Hoffman
Lloyd Honeyghan
W. Carl and Susan Hossfeld
Dawntria Hudnall
Kalina Hurley, PhD
Khalilah Imperatrice
Lori Isaac
Esther Jacobson
Robert and Carol Jagoe
Marilyn James
Kelsey Jarrell
Shanika Johnson
Andre Jones
Mark Jones
Jason Kafka
Kathleen Kane, PsyD
Howard and Marsha Kaplon
Larry Katz
Steve Katzen
Justin and Laura Kellam
Jeff Keller
Mike Kelly
Donna Kemper
Holly Kennedy
Kory and Rachel Kennedy
Lisa Kidd
Norval H. King, III
Shari Kirk
Elisa Kirsch
Sara Kissinger
Mike Klugo
Maria Koszalka
Jason Kramar
Bruce and Michele Kremer
Jo Orescanin
E. Judith Lapides
Tamekia LaPrade
Armond T. Lawson
Jocelyne Lawson
Dixie Leikach
Jonathan Leiman
Rachel Levine
Jayme Levy
Harrison and Sara Levy
Beatrice Lewis
Michael Lipman
Loraine L. Lobe
Scott Lombardi
Heather Long
Ellen Love
Robert and Maxine Lowy
Addy Lucas
Michael Lukens
Steven and Lisa Luray
Joshua and Melissa Macht
Gerald and Judith Macks
James and Susan Maddock
Nancy Maguire
Marty Manning
Kelly Marshall
Arleyne Mason
Tashia McCarty
Jason McClair
Patty McCormick
Alexa McCulloch
Christopher McGrath
Peter McKay
Annette McLaurin
Anitra McNeely
Chris Medlin
Susan Memmert
Kimberly Midgett
Lisa Miller
Ryan Miller, MD and Rebecca Miller
Jennifer Millman
Pepper Karen Mintz
Latonya Montgomery
Allison Moorefield
Diane Moorefield
Joseph Moran, Jr.
Marguerite Moran, MD and George Moran
John Morris
Donna Morris-Snoussi
Annie E. Mullen
Marc and Nancy Muser
Michelle Mutert
Dorothea Myers
Mike Myers
Kelly Myerson
Alicia Napora

Stanley and Marsha Needleman
Hannah Nelson
Kim W. Nelson
Carolyn Neste
Melanie Nies
Ryan and Beth Nolan
Richard and Linda Noll
Sydelle Norris
Taylor Ogrysko
Patrick and Melissa O'Hara
Nana Oppong
Jo Orescanin
Diana Otto
Sarah Papania
Christina Parr
Nick and Chelly Pazdan
Katherine Peck
Mike and Claire Peduto
Stu Pelkey
Travis and Kathleen Pendergast
Scott Pendleton
Ryan and Lauren Perlman
Michael and Ilyse Perlow
Wendy Perrigo
Nancy Peters
Borbala Petrovay
Leonard and Gail Pogach
William P. Price
Michael Pucci
Warren Quinn
Lea Rabinowitz
Judith Rachap
Danielle Raines, PsyD
James and Frances Rallo
Dorothy Raynor
Rebecca Rehr
Rina Rhyne
Roberta Richardson
Teddy and Donna Ricks
Connie Riddle
Timi Roberts
Steve and Katie Roenick
Michael and Laurie Rosen
Casey G. Rosenberg
Cindy Rosenstein
Louis J. Rosenthal
Sara Ruback
William and Nancy Rubin
Spencer Rubinstein
Stanley and Judith Rudo
Katherine Rudolph
Melissa Saddoughi
Linda Salzman
Joan T. Sargent
Monique Satpute, MD and Neel Satpute, MD
Gail Schlueter
Spencer Schmidt
Nachum and Rivka Schwartz
Bradley Schwimmer, PsyD and
Carleen Schwimmer
Nicole Sealfon
Sandra Serrao
Betsy Shapiro
Eric Sharoky
Joanne Sharoky
Chris and Liz Sheehan
Crystal Sheets

Rosalind Shenker
Harriet Shiffman
Katherine Shires
Terry Silva
Jessica Simering
Jeff and Sue Singer
Barbara Skidmore
Sharon Smith
Steven Smith
Mary Smyth
Anna Snee
Harriette R. Solomon
Kurt Sommer
Jeremy and Jenna Sperber
Erin Stern
Desmond Stinnie and Colleen Geisen
Diane W. Stoler
Strategic Factory
Ronald Summers
Bailey Susic and Craig Rauser
Stephen and Carolyn Sutton
Steven and Barbara Swartz
Susan Tagliaferro
Debra Taylor
Brooke Thomas
Jewel Thumma
Rachael Tillinghast
Sebastian Tirado
Mary Toland Rehus
Top Ladies Of Distinction Southern
Maryland Chapter
Austin Trach
Krystin Treaster
John Trout
Barry Troxell
Nina Turner
Mike Unger
Shawn Utz
Chris van Swol
David and Alycia VanHorn
Chris Vohrer
Terri Warner
Colleen Waters
Laurie Weitz
Samuel and Christina Wells
Angela Wenman
George and Lura Whatmough
Clarissa Whitacre
Nelson White
Missie Wilcox
Kimberly Wiley
Julia A. Wilhelm
Karen Williams
Sidney Williams, Jr.
Janece Williams-Chancy
Angela Wise-Anderson
Debbie Wolff
Raynetta Woods
Hilda Yousefian
Maria Patricia Yu
Alan and Sandra Zatz
Susan Zeiger
Bob and Betty Ann Zeller
Shelley Zimmerman
Kimberly Zippert
Diana Zwaig-Krol



Community Health Advisory Board

Members of the board include elected officials, community partners, Foundation Board members, physicians and staff who help to guide our community benefit efforts.

Trina Adams
Kisha Banks
Jameiah Blount
Delegate Tony Bridges
Matthew L. Cohen
Brianna Dorsey
Travis Ganunis, MD
Eli Getzoff, PhD
Michelle Hanover
Abigail Malischostak

Valerie Matthews
Will McCabe
Jimmy Mitchell
Ruth Ann Norton
Edward L. Perl, MD
Lauren A. Pertin
Malkia Pipkin
Councilman Isaac "Yitzy" Schleifer
Alan Taylor



Gifts in Kind

9/10 Condition Sneaker Boutique
Gregory Alexander
Katy Alexander
Alliance Marketing Partners
Amazon Logistics
Anna's Gift Foundation
Anonymous
Katherine Arendt
Ari's Bears
Heather Armstrong Webb
Blaine Baer
Baker B, LLC
Baltimore Alumnae Chapter of Kappa Delta
Baltimore Celtic 2009 Boys Soccer Team
Baltimore Hebrew Congregation
Baltimore Heritage and
Modern Quilters' Guilds
The Baltimore Ravens
Katie Bankard
Barley's Backyard
Joe Bellew
Amanda Bentzen
Alison Berry
Linda Berry
Big Steaks Management, LLC
Marina Bigsby
Rose Blakely
B-more Bayern
Bowie Police Department
Rosalind A. Bowman
Donna L. Bracken
Paula Bragg
The Bronson Family
Lauren Brown
Pat Brown
Building Better Days
The Bulla Family
Buttercream by Errine
Carol J. Caplan
Tanya Caporale
Cardz For Kidz!
Care Wear Ladies of Glen Meadows
Rachel M. Caudill
CCBC-Nursing Student Association
Charm City Gooners
Children's Hospital Association
Michelle Chudow, MD
Church of Jesus Christ of Latter-Day
Saints Youth Group
Rebecca B. Clark
Malcolm and Sandi Cohen
Elsa Collins
ConnectYourCare, LLC
Michael and Lori Connolly
Cathy Costa
John Cusack
CYC
Cylburn Arboretum Friends
Susan Adler Davis
Barbara Dent
Diane DiMartin
Stephen Dietrich
Mitzy Dillman
Do It For The Love
Steffen Drees
Nancy Dudman-Cavalier
James Earlbeck
Lawrence and Susan Eden
Elite Island Resorts
Thomas and Monica Ellis
India Farrington
Jill Feinberg and David Fishkin
Megan Fenlon
Reese Feuerman
Timothy Flemming
Flowers & Fancies
Fraternal Order of Police Lodge #34
GeBBS Consulting
Kenneth Gelfand, PhD and
Jennie Gelfand, PsyD
Gilman School

Girl Scout Troop 3802
Girl Scout Troop 721
Michael and Elizabeth Glass
Carole A. Glowacki
Jessica A. Goldberg
Mark and Elizabeth Goldstein
Charisse Gordon
The Gottlieb Family
Jerome Grant, II
Graul's Market
Greater Baltimore Church of Christ
Greater Chesapeake Charitable Foundation
Greenbelt COVID-19 Mask Makers
Gretchie's Gifts
Christopher John Grohman
The Hall Family
The Hammar Family
Sara Hanson de Peralta
Happy Hope Factory
Michele Harrington
Zach and Laura Harris
Timothy and Diane Hawes
Carson and Christine Heimer
Charisse Henry
Lena Hershkovitz
Courtney Hinkle
Emily Hirshorn
HoCo Pirate Adventures
Lisa Hoffman
Honeygo Elementary PTO
Hoopla Hospitality
Brian Horn and Veida McCampbell
Ann L. Hubbard
Jenny Hubbard
Kaitlin Ideraabdullah
Ashley Ingraham
Gary Jackson
Elizabeth Johnson
Michael and Keturah Johnson
Nylea Johnson
Knickkia Johnson-Hall
Harper Johnston, PhD
Laura Johnston-Keisling
Jonathan Williford and Michelle Jones
Amit Kalaria, MD and Kristen Kalaria
Alindwa Kamala
Kamryn Lambert Foundation
Heidi L. Karcher
Ruthmarie Kelley
Kennedy Kreations
Kory and Rachel Kennedy
Jennifer Kinniff
Mark Kirsznier
The Koch Family
Shawn Kohn
Chris Kopec
Michael Kotey
Kramer Portraits, New York
Jodi Kubisiak
La Scala Ristorante
Ryan Law
Mary A. Lawrence
Len Stoler Automotive Group
Wendy Leonard
The Living Room
Fraisia Logan
Sean and Brenda Logan
Lawrence and Susan Eden
LuxuryBowsByCindy
M.A.M.I. Organization
Jessica Maher
Make it a Glam Party Boutique
Howard and Sheila Maleson
Jessica Markison
Maryland Correctional Institution for Women
Maryland Free State Post 167
Jewish War Veterans
The Maryland Zoo in Baltimore
Betsy Matonle
Joel and Carol Matz
Madison Maxwell

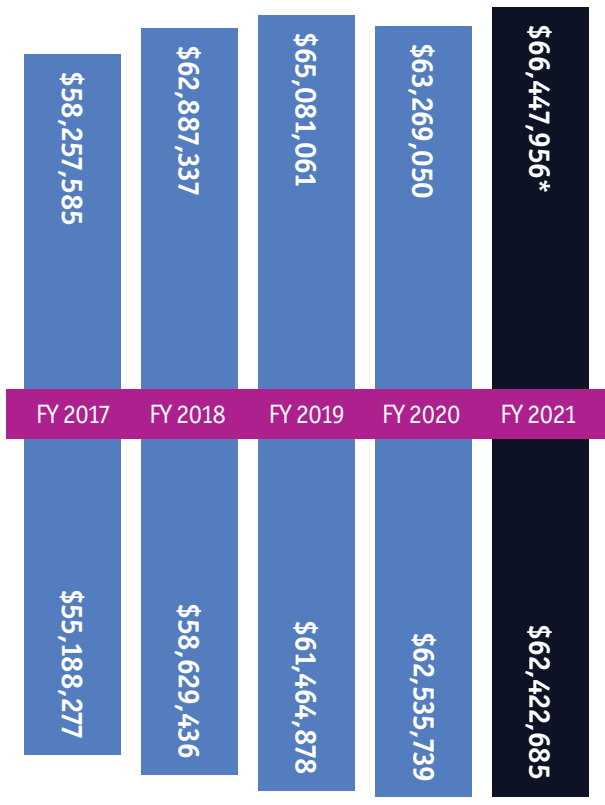


Tony Maxwell
Patrick and Niki McCormally
Joseph and Kristin McNeese
Allesia Messer
Jennifer Meyerhoff
Phyllis Meyerhoff
MINI of Baltimore
Thomas Minkin
Miss Shirley's Cafe
Brendan and Christine Moag
Randy Morgan and Mario Saenz-Quezada
Morning Star Baptist Church
Rebecca Morris
Mt. Washington Cigar Co.
The Mt. Washington Tavern
Anthony Munoz
Muriel's Miracle Holiday Stockings
Aurora Murphy
National Aquarium in Baltimore
Deb Nawrocki
Thomas and Christine New
Mindy Nguyen
George Nista
NutriBullet
Erinne O'Brien
Old Navy - Ellicott City
The Operation Team
Jean Orlando
Chuck and Tammy Page
Rosa Paige
Julie Patterson
PAWS and THINK!
Anne Paynter-Hill
Laura Ann Platek
Thomas and Matthew Preti
Primo Pasta Kitchen
Priority 1 Automotive Group
Progress Unlimited, Inc.
Kristen Losover
Radcliffe Jewelers
The Raines Family
Reads for Peds by UM School of Medicine
Shelley Reynolds
Amy Richard
Shiontae Robinson
David Dorsey and Missy Rohrbach
Maryland Free State Post 167
Jewish War Veterans
The Maryland Zoo in Baltimore
Betsy Matonle
Joel and Carol Matz
Madison Maxwell

Sharman Rowe
Gloria Rund
Ryan's Case for Smiles
Scentsty
Mildred Schaeffer
Rick Schultz
Lawrence and Rachael Serra
Shananigans Toy Shop
Lena Sharesky
Ray Shefska
Shod Enterprises Corp
Robbie S. Silverman
Thomas and Barbra Skarzynski
Beatrice Smith
Jacquelyn Smith
The Spiel Foundation
Elizabeth Stanislawczyk
Sveta Stanley
Starbucks - Mt. Washington
Brandyn Stein
Sheldon and Susan Stein
Mary Noel Stenberg
Denise L. Stevenson
Karen Still
Leonard and Roslyn Stoler
Strategic Factory
Bailey Susic and Craig Rauser
The Tanbonliong Family
Chuck and Julie Thomas
TNB Management LLC
Douglas J. Lindsey and Lynne Trautwein
UMMS Financial Shared Services
Universal Lacrosse
Susanna Van de Graaf
Verdence Capital Advisors
Mark Weber
Wee Chic, Inc.
Wegmans
Kathleen Wetzel
Brendan Williams and Orla Kane
Raina Williams
Gabriel and Winifred Wolf
Woman's Club of Chevy Chase
The Woodpeckers Guild
Worcester Eisenbrandt Inc.
Frances Worek
Lateshia Wright
Xquisite Xi Tau Chapter of
Alpha Kappa Alpha Sorority
Brent and Katie Yeager
Elizabeth Zabora
Lili Zens

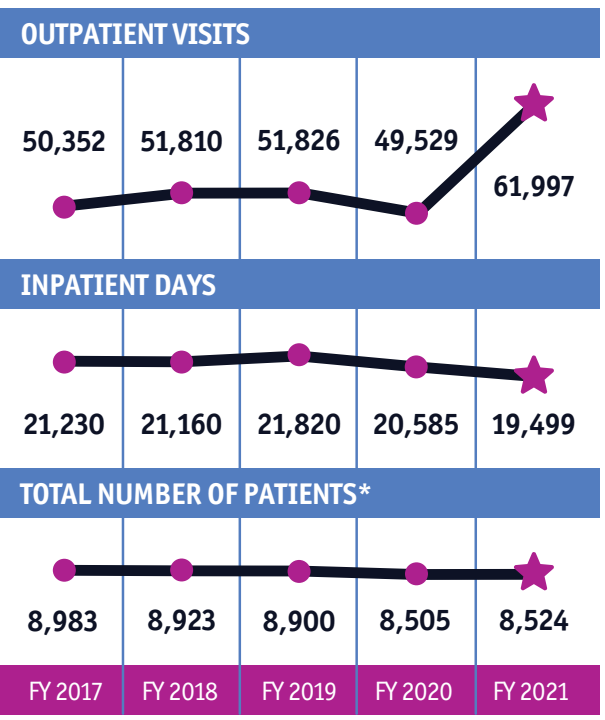
Fiscal Report 2017-2021

OPERATING REVENUE



OPERATING EXPENSES

*\$4.5 million of this operating revenue was federal COVID relief money.
FY 2021 totals are unaudited.



*55% of our patients receive Medicaid.

Mt. Washington Pediatric Hospital is a not-for-profit 501(c)(3) organization that relies upon the generous financial support of the community to maintain and establish patient care programs. Your tax-deductible gift is greatly appreciated. Please visit mwph.org, call 410-578-5040 or email development@mwph.org. Thank you.

Mt. Washington Pediatric Hospital

1708 West Rogers Avenue
Baltimore, Maryland 21209
410-578-8600

MWPH at University of Maryland Capital Region Medical Center

901 North Harry S. Truman Drive, 8th Floor
Largo, Maryland 20774

Inpatient: 240-677-1800 / Outpatient: 240-677-1850

Mt. Washington Pediatric Community Rehabilitation Services

138 Industry Lane, Unit 5A
Forest Hill, Maryland 21050

MWPH Learning Assessment Center (LAC)

1501 Sulgrave Avenue, Suite 102
Baltimore, Maryland 21209

Visit Us On



mwph.org

Published Internally by

Mt. Washington Pediatric Hospital

Editorial Direction

Andy Wayne, Director of Marketing and Communications
Katie Yeager, Communications Coordinator

Design

Creative Communications
University of Maryland Medical System

Copywriting

Loren Blinde

Principal Photographer

Katie Yeager



**Mt. Washington
Pediatric Hospital**

Where Children Go to Heal and Grow

An affiliate of University of Maryland Medical System and Johns Hopkins Medicine